



Careers Handbook

YOUR NEXT STEPS

Which path will you take?

A Levels?

T Levels?

BTEC?

Apprenticeship?

Traineeship?

Do you aspire to go to university?

Do you want to combine study and working?

If you haven't got an idea yet - don't panic! We have a dedicated Careers Leader in Mr Sutherland to help you decide the right path for you.

A Levels explained



A Levels are Advance of GCSE's. They take two years of full-time study to complete. A Levels are academic qualifications that are usually studied in modules. A Levels will provide opportunities for developing and generating evidence for assessing the key skills; communication, information technology, improving own learning and performance, working with others, problem solving.

Example of A Level Subjects

Accounting	Drama & Theatre	Geology	Physics
Art & Design – Fine Art	Economics	German	Politics
Art & Design – Graphics & 3D Design	English Language	History	Psychology
Art & Design – Photography	English Literature	Law	Religious Studies
Biology	Film Studies	Mathematics	Sociology
Business	French	Media Studies	Spanish
Chemistry	Further Mathematics	Music	Statistics
Computer Science	Geography	Philosophy	

The completion of A Levels will earn UCAS Tariff Points to apply for university.

Ucas Tariff points are a way of translating grades from a number of qualifications into a numerical value (the points required for entry on to a course).

	A-Levels	AS Levels	Scottish Highers	Advanced Highers
A*	56			
A	48	20	33	56
B	40	16	27	48
C	32	12	21	40
D	24	10	15	32
E	16	6		

T Levels explained



T Levels are equivalent to three A Levels. They take two years of full-time study to complete. It's a great way to get into skilled employment, further study or higher apprenticeship.

T Level students spend 80% of their time in the classroom, learning about theory. The other 20% will be putting this into practice on 45 days (9 weeks) industry placement.

T Levels help to get real workplace experience, students will learn from specialist experts and helps develop the skills employers are looking for.

*Example of T Level Subjects - **NEW 2023*

Agriculture, Environment and Animal Care **	Digital	Protective Services
Business and Administration	Engineering and Manufacturing	Sales, Marketing and Procurement
Catering and Hospitality **	Hair and Beauty **	Social Care
Construction	Health and Science	Transport and Logistics
Creative and Design **	Legal, Finance and Accounting	

The completion of T Levels will earn UCAS Tariff Points to apply for university.

UCAS Tariff points are a way of translating grades from a number of qualifications into a numerical value (the points required for entry on to a course).

	T Level Overall Grade
Distinction*	168
Distinction	144
Merit	120
Pass (C or above on the core)	96
Pass (D or E on the core)	72

BTEC are a vocational form of study with a range of course choice. The courses tend to combine theory, practical and work related. You will learn by completing projects and assignments that are based on realistic workplace situations and activities. You will focus on a particular subject area and develop a range of specialist skills and knowledge. BTECs can be started at different levels.

Level 1 = Foundation, Level 2 = GCSE, Level 3 = A Level, Level 4-5 = Degree Level
 Nat. Ext Cert = 1 qualification, Nat. Dip = 2 qualifications, Nat. Ext Dip = 3 qualifications

Examples of BTEC courses

Accounting	Construction	Fashion	Music Performance & Production
Aerospace Engineering	Customer Service	Forensic & Criminal Investigation	Performing Arts
Animal Welfare & Veterinary Nursing	Digital Media Production	Foundation Learning	Photography
Art & Design	Early Years & Childhood Studies	Graphic Design	Plumbing
Backstage Production Arts	Electrical Installation	Hairdressing & Barbering	Psychology, Criminology & Law
Beauty Therapy & Make-Up	Electronic Engineering (Robotics)	Health & Social Care	Public Services
Built Environment & Sustainable Technologies	Engineering	Hospitality & Catering	Science
Business & Management	ESOL	Manufacturing Engineering	Sport & Exercise Science
Computing & Emerging Technologies	Event Planning	Motor Vehicle	Travel & Cabin Crew

The completion of **BTEC Level 3** will earn UCAS Tariff Points to apply for university.

Ucas Tariff points are a way of translating grades from a number of qualifications into a numerical value (the points required for entry on to a course).

National Extended Certificate		National Diploma		National Extended Diploma	
D*	56	D*D*	112	D*D*D*	168
D	48	D*D	104	D*D*D	160
M	32	DD	96	D*DD	152
P	16	DM	80	DDD	144
		MM	64	DDM	128
		MP	48	DMM	112
		PP	32	MMM	96
				MMP	80
				MPP	64
				PPP	48

Apprenticeships explained

Apprenticeships are a brilliant way to break into an industry straight from school. You spend time working with an employer usually 4 days a week and 1 day studying towards a qualification (typically a BTEC) at a college or training provider.

A combination of earning money while you study.

Most apprenticeships are sponsored by the employer - they are investing in you! In most cases, a successful apprenticeship will result in full-time employment when completed.

Type of Apprenticeships



Level	Description	Academic
1	Ideal if you're just starting out or are new to the subject area.	GCSE grades D - G
2	You need to have some knowledge or experience of the area.	GCSE grades A* - C
3	Covers more complex work and also will help you develop your supervisory skills.	A-Level
4	Most likely you'll have management experience by this point.	Undergraduate, Foundation Degree
5	Most likely you'll have management experience by this point.	Undergraduate, Foundation Degree

After completion of A Levels/T Levels/BTEC Level 3 or Advanced Apprenticeship you can apply for a higher/degree apprenticeship which is sponsored by your employer and will not encounter any university fees.

Traineeships explained



A traineeship is a course that supports 16-24-year-olds (25 if they hold an Education, Health and Care Plan) with gaining experience of the workplace to prepare them for an apprenticeship or work.

Traineeships are delivered by a range of providers, including, Colleges, Independent Training Providers, local authority providers and many more.

A traineeship aims to provide young people with the skills that employers are looking for and can last between 6 weeks - 1 year (but usually lasting 6 months) They are designed to bridge the gap between learning and employment.

What to expect:

- training to prepare you for work, including CV writing and what to expect in the workplace
- support to improve your English, maths and digital skills if you need it (mostly those students who achieve grade 2 or below in GCSE English and Maths)
- sector focused vocational learning to help prepare you for your apprenticeship or job and recognition of your learning

A traineeship is a training programme with work experience - it isn't a job and you do not gain any formal qualifications. Employers are not required to pay you for the work placement, but they can support you with expenses such as transport and meals.



SUPPORT

PERSONAL GUIDANCE

Gatsby Benchmark 8

What the government says.... *Every student should have opportunities for guidance interviews for guidance interviews with a career adviser, who could be an internal (a member of school staff) or external. These should be available whenever significant study or career choices are being made. Every student should have a least one such interview by the age of 16.*

To help all our EBN students, we have a robust system in place to ensure provision of career interviews takes place for all students, whether face to face or virtually.



Interviews can help you explore various career options, provide you with specific industry information and give you advice about Post 16 destinations and the world of work.

The Careers Leader provide impartial Information, Advice and Guidance on a student rota basis.



PATHWAYS AFTER YEAR 11



FINAL GCSE RESULTS WILL DETERMINE YOUR ROUTES

FACT: Better the grades you achieve, better your choices.

What will you do?

Examples of where your final grades could take you;

Grammar 6 th Form	7+ GCSES grade 6/7 or above with both English and maths at grade 6
A Levels	5+ GCSES grade 5/6 or above with both English and maths
T Levels	5+ GCSES grade 5 or above including English and maths
BTEC Level 3	5+ GCSES grade 4 or above including both English and maths at grade 4
BTEC Level 2	4 GCSES grade 3 or above (resit English and/or maths if applicable)
BTEC Level 1	No formal qualifications (study/resit English and maths)
Apprenticeship (Adv)	5+ GCSES grade 4 or above including both English and maths at grade 4
Apprenticeship (Int)	4 GCSES with English and maths at grade 4
Traineeship	No formal qualifications

SIXTH FORMS, COLLEGES OR APPRENTICESHIP PROVIDERS MAY ASK FOR SPECIFIC GRADES AT GCSE IN ORDER FOR YOU TO FURTHER STUDY. PLEASE ENSURE YOU READ 'ENTRY REQUIREMENTS' BEFORE APPLYING. STUDENTS WHO NEED ASSISTANCE IN APPLICATION MAKING, SEE THE CAREERS LEADER IN M5.

PROVIDERS WILL BASE CONDITIONAL OFFERS ON TARGET GRADES. A 'CONDITIONAL OFFER' IS ONLY SUBJECT TO YOU GETTING THE GRADES REQUIRED. DON'T ASSUME WHEN YOU GET A CONDITIONAL OFFER YOU HAVE SECURED A PLACE!

*****YOUR GCSE GRADES WILL STAY WITH YOU FOR THE REST OF YOUR WORKING LIFE. YOU WILL NEED TO DISCLOSE YOUR GCSE GRADES ON EVERY FUTURE COLLEGE, UNIVERSITY AND JOB APPLICATIONS.**

MAKE THEM THE BEST THEY CAN BE!***

UNDERSTANDING DIFFERENT LEVELS

The majority of EBN students study GCSE which is Level 2.

Before you start applying for courses, you need to refer to your target grades.

Look and apply for courses appropriately.

Qualifications and Pathways

There are eight qualification levels, and most qualifications have a difficulty level. Therefore, the higher the level, the more difficult the qualification is. The table below illustrates the qualifications and pathways for young people to consider.

	Academic	Vocational	Work-based Learning
Entry levels 1-3			
1	GCSE	BTEC	Traineeship / NVQ Level 1
2	GCSE	BTEC	Intermediate Apprenticeship / NVQ Level 2
3	A Level	BTEC / T Levels	Advanced Apprenticeship / NVQ Level 3
4	Honours Degree (Year 1)	Higher National Certificate (HNC) / BTEC Higher	Higher Apprenticeship / NVQ Level 4
5	Honours Degree (Year 2)	Higher National Diploma (HND) / BTEC Higher	Degree Apprenticeship / NVQ Level 5
6	Honours Degree (Year 3)	BTEC Professional	Degree Apprenticeship / NVQ Level 6
7	Master's degree	BTEC Professional	Degree Apprenticeship / NVQ Level 7
8	Doctorate (PHD)	BTEC Professional	NVQ Level 8

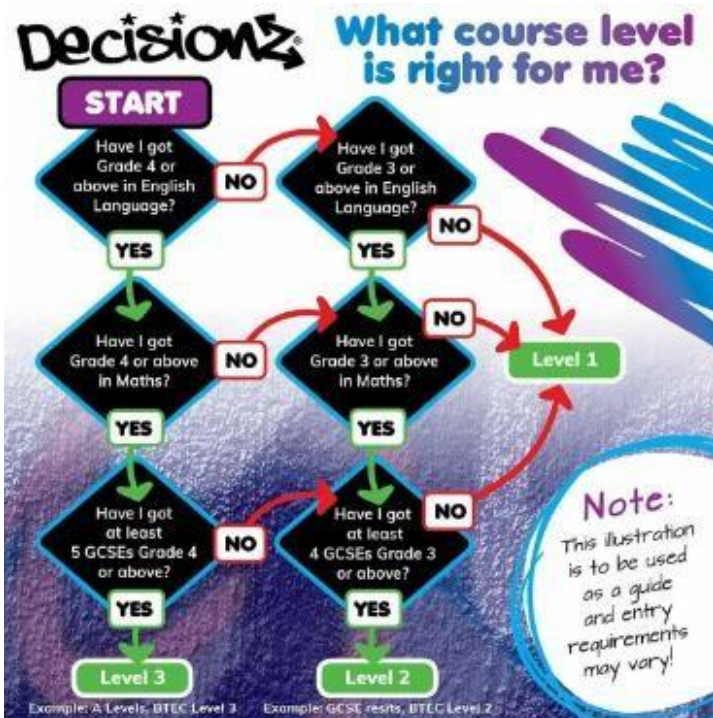
University Facts - West Midlands



160,000
educated students
each year



55,000
New graduates
annually



It is important to check entry requirements for every course as sometimes it can vary from college to college

LIST OF PROVIDERS IN WEST MIDLANDS

College	Location	Address	Website	Telephone
Access Creative College	Digbeth Campus	68 Heath Mill Lane, Birmingham B9 4AR	www.accesscreative.ac.uk	0800 28 18 42
Aston University Engineering Academy	Aston Triangle	1 Lister Street, Birmingham B7 4AG	www.auea.co.uk	0121 380 0570
BIMM Birmingham (Music College)	Digbeth	93-96 Floodgate St, Deritend, Birmingham B5 5SR	www.bimm.ac.uk	0344 2 646 666
Birmingham Metropolitan College (BMET)	Sutton Coldfield	34 Lichfield Road, Sutton Coldfield B74 2NW	www.bmet.ac.uk	0121 446 4545
Birmingham Metropolitan College (BMET)	James Watt Campus	Aldridge Road, Great Barr B44 8NE	www.bmet.ac.uk	0121 446 4545
Birmingham Metropolitan College (BMET)	Matthew Boulton	Jennens Road, Birmingham B4 7PS	www.bmet.ac.uk	0121 446 4545
Birmingham Metropolitan College (BMET)	Art & Design Centre	Venture Way, Brierley Hill DY10 1AA	www.bmet.ac.uk	0121 446 4545
Birmingham Metropolitan College (BMET)	Erdington Skills Centre	Edwards Road, Erdington B24 9EW	www.bmet.ac.uk	0121 446 4545
Birmingham Metropolitan College (BMET)	Kidderminster Academy	Piano Building, Weavers Wharf, Kidderminster DY11 7DY	www.bmet.ac.uk	0121 446 4545
Birmingham Metropolitan College (BMET)	Stourbridge College	Hagley Road, Stourbridge DY8 1QU	www.bmet.ac.uk	0121 446 4545
Birmingham Metropolitan College (BMET)	The Botanical Gardens	Westbourne Road B15 3TR	www.bmet.ac.uk	0121 446 4545
Birmingham Metropolitan College (BMET)	Centre Of Sporting Excellence	Brintons Field, Zortech Avenue, Kidderminster DY11 7DY	www.bmet.ac.uk	0121 446 4545
Birmingham Ormiston Academy (BOA)	City Centre	1 Grosvenor Street, Birmingham B4 7QD	www.boa-academy.co.uk	0121 359 9300
Bournville College South & City	Longbridge	1 Longbridge Lane, Longbridge B31 2TW	www.sccb.ac.uk	0800 111 6311
Cadbury Sixth Form College	Kings Norton	Downland Close, Birmingham B38 8QT	www.cadcol.ac.uk	0121 458 3898
Joseph Chamberlain Sixth Form College	Highgate	1 Belgrave Road, Birmingham B12 9FF	www.jcc.ac.uk	0121 446 2200
National College for High Speed Rail	Aston Triangle	2 Lister St, Birmingham B7 4AG	www.nchsr.ac.uk	0330 120 0375
Solihull College	Blossomfield Campus	Blossomfield Road, Solihull B91 1SB	www.solihull.ac.uk	0121 678 7000
Solihull College	Woodlands Campus	Auckland Drive, Solihull B36 0NR	www.solihull.ac.uk	0121 678 7000
Solihull Sixth Form College	Solihull	Widney Manor Road, Solihull B91 3WR	www.solihullsfsc.ac.uk	0121 704 2581
South And City College	Bordesley Green Campus	Fordrough Lane, Birmingham B9 5NA	www.sccb.ac.uk	0800 111 6311
South And City College	Digbeth Campus	High St, Deritend, Birmingham B5 5SU	www.sccb.ac.uk	0800 111 6311
South And City College	Hall Green Campus	Cole Bank Road, Hall Green, Birmingham B28 8ES	www.sccb.ac.uk	0800 111 6311
South And City College	Handsworth Campus	Soho Road, Birmingham B21 9LR	www.sccb.ac.uk	0800 111 6311
University College Birmingham (UCB)	City Centre	Summer Row, Birmingham B3 1JB	www.ucb.ac.uk	0121 604 1000
WGM Academy For Young Engineers	Chelmsley Wood	Chelmsley Road, Solihull B37 5FD	www.solihull.wmgacademy.org.uk	0121 289 3556

Grammar 6th Forms	Location	Address	Website	Telephone
Bishop Vesey's Grammar School (mixed 6th Form)	Sutton Coldfield	Lichfield Road, Sutton Coldfield, Birmingham B74 2NH	www.bvgs.co.uk	0121 250 5400
King Edward VI Handsworth Boys Grammar School	Birmingham	Grove Road, Birmingham B21 9ET	www.handsworth.bham.sch.uk	0121 554 2794
King Edward VI Aston School	Aston	Frederick Road, Aston, Birmingham B6 6DJ	www.keaston.bham.sch.uk	0121 327 1130
King Edward VI Camp Hill School for Boys	Kings Heath	Vicarage Road, Kings Heath, Birmingham B14 7QJ	www.camphillboys.bham.sch.uk	0121 444 3188
King Edward VI Camp Hill School for Girls	Kings Heath	Vicarage Road, Kings Heath, Birmingham B14 7QJ	www.kechg.org.uk	0121 444 2150
King Edward VI Handsworth School for Girls	Handsworth	Rose Hill Road, Handsworth, Birmingham B21 9AR	www.kingedwardvi.bham.sch.uk	0121 554 2342
King Edward VI Five Ways School (mixed)	Bartley Green	Scotland Lane, Bartley Green, Birmingham B32 4BT	www.kefw.org	0121 472 1147
Sutton Coldfield Grammar School for Girls	Sutton Coldfield	Jockey Road, Sutton Coldfield, Birmingham B73 5PT	www.suttcold.bham.sch.uk	0121 345 1479
Local 6th Forms	Location	Address	Website	Telephone
Archbishop Ilsley	Birmingham	Victoria Road, Birmingham B27 7XY	www.ilsley.bham.sch.uk	0121 706 4200
Ark St Albans	Birmingham	Conybere Street, Birmingham B12 0YH	www.arkstalbans.org	0121 446 1300
Bordesley Green Girls	Birmingham	Bordesley Green Road, Birmingham B9 4TR	www.bordbrng.bham.sch.uk	0121 464 1881
Heartlands Academy	Birmingham	Great Francis Street, Nechells, Birmingham B7 4QR	www.heartlandsacademy.e-act.org.uk	0121 464 3931
John Henry Newman	Birmingham	Chelmsley Road, Chelmsley Wood, Birmingham B37 5GA	www.johnhenrynewmanatholiccollege.org.uk	0121 770 5331
King Edward VI Sheldon Heath Academy	Birmingham	Sheldon Heath Road, Birmingham B26 2RZ	www.keshacademy.com	0121 464 4428
Small Heath Lower School	Birmingham	Waverley Road, Birmingham B10 0EW	www.smallheathacademy.com	0121 464 7997
Waverley Studio College	Birmingham	Yardley Green Road, Birmingham B9 5QA	www.waverleystudiocollege.co.uk	0121 566 6622
Training Providers	Location	Address	Website	Telephone
Bellis Training Limited	Birmingham	Hastingwood Ind, Pk Wood Lane, Birmingham B24 9QR	www.nvq-centre.co.uk	0121 270 1067
Crackerjack Training Ltd	Birmingham	78-79 Francis Road, Birmingham B16 8SP	www.crackerjacktraining.co.uk	0121 454 2043
Creative Alliance	Birmingham	213 Scott House, Custard Factory, Gibb Street, Birmingham, B9 4AA	www.creativealliance.org.uk	0121 753 0049
Make UK	Birmingham	Hubs Across Birmingham	www.makeuk.org	0808 168 5874
GB Training	Birmingham	Wynner House, 143 Bromsgrove Street, Birmingham B5 6RG	www.gbtraining.org.uk	0121 622 4218

Gordon Franks Training	Birmingham	St James House, 1 St James Place, Birmingham B7 4JE	www.gordonfrankstraining.co.uk	0121 333 3001
Heart Of England Training Ltd	Birmingham	12 The Priory, Queensway, Birmingham B4 7LJ	www.hoet.co.uk	0121 236 8595
JTL	Birmingham	Mill Street, Birmingham B6 4BS	www.jtltraining.com	0800 085 2308
Key Training	Birmingham	148 Great Charles Street, Queensway, Birmingham B3 3HT	www.keytraining.co.uk	0121 236 7512
Learn Direct Limited	Birmingham	4th Floor Grosvenor House, Bennets Hill, Birmingham B2 5RS	www.learndirect.com	024 7670 7921
Midland Group Training Services	Coventry	Midland Group Training Services, Gulson Road, Coventry CV1 2JG	www.mgts.co.uk	024 7663 0333
Motivational Preparation College For Training (MPCT)	Birmingham	Balaam Wood Academy, New Street, Frankley, Birmingham	www.mpct.co.uk	0330 111 3939
New Horizons	Birmingham	Unit 30, Bordesley Trading Estate, 19 Bordesley Green Road, Birmingham B8 1BZ	www.newhorizons.com	0121 328 7995
New Horizons	Birmingham	111 Bishopsgate Street, Birmingham B15 1ET	www.newhorizons.com	07949 592475
Nova Training	Birmingham	161-163 Station Road, Birmingham B33 8BA	www.novatrainng.co.uk	0121 783 9824
Pathway First	Birmingham	95 Amington Road, Birmingham B25 8EP	www.pathwaygroup.co.uk	0121 707 0550
PeoplePlus	Birmingham	6th Floor, Edmund House, 12-22 Newhall Street, Birmingham B3 3AS	www.peopleplus.co.uk	0800 345666
Protocol Consultancy	Birmingham	1 New Market Street, Birmingham B3 2NH	www.protocolgroup.org.uk	0121 236 2634
Performance Through People	Birmingham	Mill House, 7 Mill Street, Birmingham B6 4BS	www.ptp-training.co.uk	0121 643 2653
Reflections Training Academy	Birmingham	2 Commercial Street, Birmingham B1 1RS	www.reflectionstraining.co.uk	0121 643 2147
South And City, Digbeth Campus	Birmingham	High St, Deritend, Birmingham B5 5SU	www.sccb.ac.uk	0800 111 6311
Solihull College & University Centre	Blossomfield Campus	Blossomfield Road, Solihull B91 1SB	www.solihull.ac.uk	0121 678 7000
The Development Manager Ltd	Birmingham	220 Scott House, The Custard Factory, Gibb Street, Birmingham B9 4AA	www.thedevelopmentmanager.com	0333 101 0040
Apprenticeships	Website			
To Search For Apprenticeships	www.gov.uk/apply-apprenticeship			
Information on Apprenticeships	www.getinsofar.gov.uk			
Information on Apprenticeships	www.gov.uk/topic/further-education-skills/apprenticeships			

INTERESTED IN SPORT

There are numerous of opportunities if you play a sport or interested in playing a sport. Please ask Mr Sutherland for more information.

Football and Education



EDUCATION PATHWAYS & PROGRAMMES

Education Pathways & Programmes



Football Education & Coaching Programme in partnership with West Bromwich Albion Foundation (Male and Female)

[Pearson Edexcel](#)



WHO IS THIS COURSE FOR?

This two-year course is aimed at talented 16-18 year-olds who have a passion for football and an ambition to work in the industry. It's vital that you are prepared to work towards an academic qualification in Sport as well as developing your football playing ability. The football programme will be similar to WBA Academy multidisciplinary training structure, to support its player development and recruitment.

16-19 BURSARY FUND

You could get a bursary to help with education-related costs if you're aged 16 to 19

For more information: www.gov.uk

A bursary is money that you, or your education or training provider, can use to pay for things like:

- clothing, books and other equipment for your course
- transport and lunch on days you study or train



You could get a bursary worth up to £1,200, depending on your circumstances and benefits.

You could get a discretionary bursary if you need financial help but do not qualify for a bursary for students in vulnerable groups. Your education or training provider decides how much you get and what it's used for.

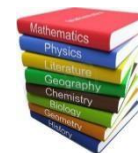


College will have their own criteria for discretionary bursaries. They'll look at your individual circumstances - this usually includes your family income.



Your provider will decide how you get your bursary. You might be:

- paid in full or instalments, in cash or through a bank account
- given things like a travel pass, free meals or books instead of money



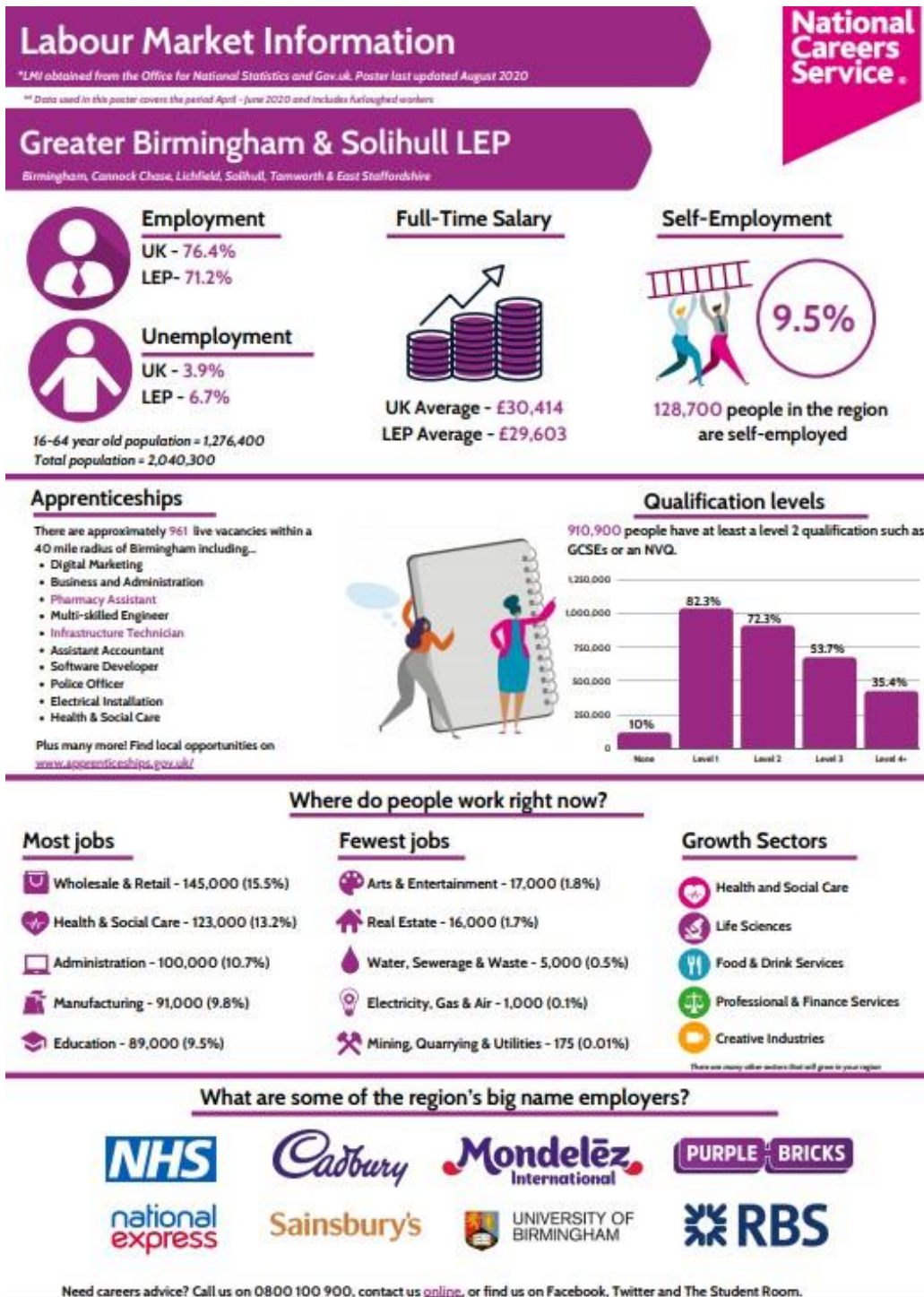
Some providers also offer one-off payments to cover study trips or travel for university interviews.

Please be encouraged to ask to see if you qualify.

LABOUR MARKET INFORMATION

GATSBY BENCHMARK 2 – Learning from the Labour Market Information

IT'S GOOD TO KNOW WHAT JOB SECTORS ARE GROWING IN THE WEST MIDLANDS, SEE BELOW WHICH JOB SECTORS ARE CURRENTLY ON THE RISE.



USEFUL LINKS TO HELP YOU EXPLORE

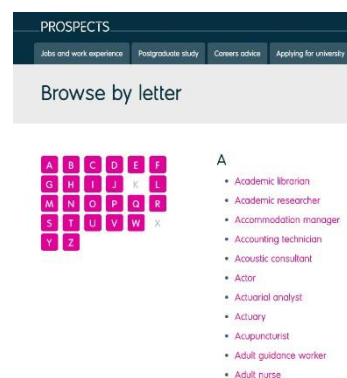
www.ucas.com



<https://www.gov.uk/apply-apprenticeship>



www.nationalcareersservice.direct.gov.uk

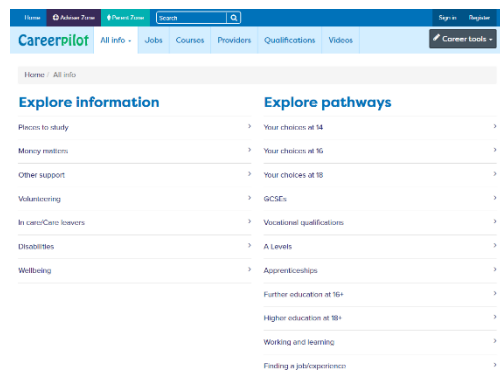


www.u-explore.com

www.prospects.ac.uk

www.university.which.co.uk

www.careerpilot.org.uk



www.icould.com



www.imiforall.org.uk



Cockshut Hill School

APPLICATIONS

What should you be doing during Autumn Term?

Guidance - Still unsure what you want to do - talk to the Careers Leader Mr Sutherland.

Research - start looking at Local Providers and courses. Book onto Open Days. Do you want to do A Levels, T Level or BTEC? Some colleges allow you to do a mix of both.

Apply - get your applications in early as courses start filling up quickly. *There are 79 secondary schools in Birmingham (over 12,000 students) competing for Further Education places.* Applications tend to be completed **online**. There is no limit in the amount of applications you make. If you are made an offer **accept it - do not decline any offers.**

Course 1. Be Realistic - look at entry requirements close to your target grades

Course 2. Be Aspirational - look at courses in case you do better than predicted

Course 3. Edge your bets - just in case something doesn't go to plan look at alternative courses. (E.g. BTEC instead of A Levels)

FE courses will open from October.

Apprenticeships – Companies will advertise for positions throughout the year, its important to keep checking periodically.

Lots of apprenticeships can be found on the GOV.UK website - Find an apprenticeship:

<https://www.gov.uk/apply-apprenticeship>

If you have a specific company you would like to work for (i.e JLR, BMW, BT) keep checking their website for updates they tend to be from January onwards.

If you want to apply for an apprenticeship, please ensure you sign up for notifications on the National Apprenticeship Website

www.apprenticeships.gov.uk



REFERENCES AND INTERVIEWS

All students need to make at least 1 application by **December**. Do not wait for mocks and mocks results. Colleges make offers based on teacher predictions/references. College places are competitive so early applications are advisable.



Reference Request Form

Today's Date: / /

Name:	Form Group:
Applied to:	
Name of College:	
Course Title:	
Level:	

Once applications are made, please request a reference to support your application.

References will be emailed directly to the college/FE Provider. Paper versions can be requested.

****If your college asks for a name or email details for your referee please use;**

Next steps;

You should now prepare for your Interview?

Interviews - Colleges/FE Providers will invite students for interview. Interviews may be conducted by telephone, virtually or in person. If any student needs assistance/practice for their interview, please do not hesitate to ask the Careers Leader.



If you are required for interview during the school day, you will need to provide evidence and seek permission from the Attendance Team.



POST 16 OFFERS

When you have made an application and attended your interview, you may be made an offer.

Conditional Offer – you must achieve the grades to gain a place. This is not a guarantee you have been accepted.

Unconditional – in exceptional circumstances, colleges will make these to students who have impressed and want them to join their college regardless of GCSE grades.

Unsuccessful – this could be a number of things. i.e., you have applied to a course and your target grades do not match the entry requirements or there are errors on your application or misconduct – seek help from the Careers Leader (Mr Sutherland who can advise you.

What should you do if you do not hear from colleges or providers?

Be patient and ask for help! - Keep applying if you haven't had any offers. Let your Careers Leader (Mr Sutherland) know.

You have applied to multiple colleges?

Consolidate – Start thinking about your offers and preferences. However, do not reject any offers made to you.



You do not need to decide about where you are going until you have opened your GCSE Results in August.

GLOSSARY

GCSEs – are British educational qualifications which schoolchildren take when they are fifteen or sixteen years old. GCSE is an abbreviation for 'General Certificate of Secondary Education'.

BTECs – BTECs are vocational, work-related qualifications that aim to engage and inspire learners in a wide range of subjects. The content of your course and the knowledge you will gain depends on the subject you choose. The aim of a BTEC is to develop skills that apply to the workplace and will be beneficial for the future, and so your learning will be tailored around the specific sector you are studying. BTECs develop more practical knowledge and provide a different approach to learning, based alongside a theoretical background.

Sixth Form – a sixth form is an educational institution in where students aged 16 to 19 typically study for advanced school-level qualifications, such as A-levels, BTEC Level 3 and the International Baccalaureate Diploma, or school-level qualifications such as GCSEs. Sixth forms, usually, prepare you for university/degree apprenticeships.

A-levels – Advanced levels are the most common step-up from GCSEs. They normally take two years to complete, full-time and are at Level 3. They would usually need at least five GCSEs at grades 9 to 4 to be able to study them. Some providers require you to have grade 4 or above in English and Maths, or grade 5 or above in the subject you want to take. You usually choose the A-levels that you wish to study in Year 11, but you do have the chance to change your choices after receiving your GCSE results or after a week or so of the course if it is not what you expected. There is a wide range of around 80 subjects available, although exact courses on offer will change depending on the college or sixth form you choose.

Further Education (FE) Colleges – FE colleges generally offer vocational (work-related) and specialist qualifications. Examples might include qualifications in construction, hair and beauty, animal care etc. They tend to provide courses for 16-18 year olds as well as adult learners, and often have close links with the community. FE colleges offer a wide range of courses at a variety of levels. FE colleges, on the whole, prepare you for the world of work.

T Levels - these 2-year courses have been developed in collaboration with employers and businesses to prepare students for work. T Levels will offer students a mixture of classroom learning and 'on-the-job' experience during an industry placement of at least 315 hours (approximately 45 days). They will provide the knowledge and experience needed to open the door into skilled employment, further study or a higher apprenticeship.

Apprenticeships – to get your career started you usually need a combination of experience and qualifications. An apprenticeship gives you both by combining on the job training with study (usually one day a week) meaning you can earn while you learn. With some apprenticeships you can even get a degree. It usually takes between one and four years to complete an apprenticeship depending on which level you take. Apprenticeships are available across a wide range of industries and many high-quality, prestigious companies offer them.

Traineeships – a traineeship is an education and training programme with work experience that unlocks the great potential of young people and prepares them for their future careers by helping them to become 'work ready'. Designed to help young people aged 16 to 24 who don't yet have the appropriate skills or experience, traineeships provide the essential work preparation training, English, maths and work experience needed to secure an apprenticeship or employment.

University – a higher-level educational institution in which students study for degrees and academic research is done. University is, usually, attended after students have completed suitable Level 3 qualifications such as A Levels and BTECs etc. Higher (degree) apprenticeships may fund a young person's part-time university degree at the same time as getting paid for working in a job.

Russell Group Universities – (sometimes called Red Brick) the Russell Group represents 24 leading UK universities which are committed to maintaining the very best research, an outstanding teaching and learning experience and unrivalled links with business and the public sector.